

Supporting Pupils with Medical Needs

Policy

Children's Services and Safety Team

Version 2 – September 2017

Name of Unit/Premises/Centre/ School:	Old Basing Infant School
Name of Responsible Manager/Headteacher:	Mrs Tracey McCarley
Date Policy approved and adopted:	
Date Due for review:	

Introduction

Section 100 of The Children and Families Act 2014 places a duty on the governing body of this school to make arrangements for supporting children at their premise with medical conditions. The Department of Education have produced statutory guidance 'Supporting Pupils with Medical Conditions' and we will have regard to this guidance when meeting this requirement.

We will endeavour to ensure that children with medical conditions are properly supported so that they have full access to education, including school trips and physical education. The aim is to ensure that all children with medical conditions, in terms of both their physical and mental health, are properly supported in school so that they can play a full and active role in school life, remain healthy and achieve their academic potential.

It is our policy to ensure that all medical information will be treated confidentially by the Headteacher and staff. All administration of medicines is arranged and managed in accordance with the Supporting Pupils with Medical Needs document. All staff have a duty of care to follow and co-operate with the requirements of this policy.

Where children have a disability, the requirement of the Equality Act 2010 will apply.

Where children have an identified special need, the SEN Code of Practice will also apply.

We recognise that medical conditions may impact social and emotional development as well as having educational implications.

Key Roles & Responsibilities

The Governing Body is responsible for:

- Ensuring that pupils with medical conditions are supported to enable the fullest participation possible in all aspects of school life.
- Ensuring that any members of school staff who provide support to pupils with medical conditions are able to access information and other teaching support materials as needed.
- Ensuring that staff carrying out a role to support pupils with medical conditions are supported by the school and their training needs are reviewed regularly.

The Head Teacher is responsible for:

- Ensuring that all staff are aware of the policy for supporting pupils with medical conditions and understand their role in its implementation.
- Ensuring that all staff who need to know are aware of any children with a medical condition, and are included in any discussions relating to their needs where appropriate.

- Ensuring that sufficient trained numbers of staff are available to implement the policy and deliver against all individual healthcare plans, including in contingency and emergency situations.
- Ensuring school staff are appropriately insured to support pupils.

Teachers and Support Staff are responsible for:

- Ensuring that they are aware of the medical needs of children in their care.
- Ensuring that they feel they have received sufficient and suitable training, and have achieved the necessary level of competency before they take on responsibility to support children with medical conditions.

The School Link Nurse/medical professional is responsible for:

- Supporting the school when a child has been identified as having a medical condition which will require support in school.
- Providing confirmation of the proficiency of staff in a medical procedure.

Local Arrangements

Identifying children with health conditions

Statutory Requirement: *The Governing body will ensure that the policy sets out the procedures to be followed whenever a school is notified that a pupil has a medical condition.*

We will aim to identify children with medical needs on entry to the school by working in partnership with parents/ carers and following the process outlined in the document 'Process for identifying children with a health condition' produced by the Southern Health School Nursing Team in conjunction with the Children's Services Health and Safety Team (Appendix A). We will use the 'Health Questionnaire for Schools' (Appendix B) to obtain the information required for each child's medical needs to ensure that we have appropriate arrangements in place prior to the child commencing at the school to support them accordingly.

Where children have health needs identified through an EHCP, we will ensure extensive dialogue with the previous setting, if applicable, to support our understanding of their medical needs before they attend our setting alongside the process above.

Where a formal diagnosis is awaited or is unclear, we will plan to implement arrangements to support the child, based on the current evidence available for their condition. We will ensure that every effort is made to involve some formal medical evidence and consultation with the parents.

Individual health care plans

Statutory Requirement: *The Governing body will ensure that the school's policy covers the role of individual healthcare plans, and who is responsible for their development in supporting children at school with medical conditions.*

We recognise that Individual Healthcare Plans are recommended in particular where conditions fluctuate or where there is a high risk that emergency intervention will be needed, and are likely to be helpful in the majority of other cases, especially where medical conditions are long term and complex. However, not all children will require one. The school, healthcare professional and parent will agree based on evidence when a healthcare plan would be inappropriate or disproportionate.

Where children require an individual healthcare plan it will be the responsibility of the parent, together with the relevant healthcare professional, to write the plan. The school will support parents in this process where appropriate.

A healthcare plan (and its review) may be initiated in consultation with the parent/carer, by a member of school staff or by a healthcare professional involved in providing care to the child. The Head Teacher will support the parents/carer, and a relevant healthcare professional e.g. school, specialist or children's community nurse, who can best advise on the particular needs of the child to draw up and/or review the plan. Where a child has a special educational need identified in a statement or Educational Health Care (EHC) plan, the individual healthcare plan will be linked to or become part of that statement or EHC plan.

We may also refer to the flowchart contained within the document 'Process for identifying children with a health condition' for identifying and agreeing the support a child needs and then developing the individual healthcare plan.

We will use the individual healthcare plan template produced by the DfE to record the plan, for those children with moderate needs e.g. asthma, or follow the Care Plan issued by the hospital for the children with more severe conditions e.g. allergies which require the school to hold an EpiPen.

If a child is returning following a period of hospital education or alternative provision (including home tuition), that we will work with Hampshire County Council and education provider to ensure that the individual healthcare plan identifies the support the child will need to reintegrate effectively.

Statutory Requirement: *The governing body should ensure that all plans are reviewed at least annually or earlier if evidence is presented that the child's needs have changed. Plans should be developed with the child's best interests in mind and ensure that the school assesses and manages the risks to the child's education, health and social well-being and minimise disruption.*

Statutory Requirement: *When deciding what information should be recorded on individual healthcare plans, the governing body should consider the following:*

- The medical condition, its triggers, signs, symptoms and treatments;
- The pupil's resulting needs, including medication (dose, side effects and storage) and other treatments, time facilities, equipment, testing, access to food and where this is used to manage their condition, dietary requirements and environmental issues, e.g. crowded corridors;
- Specific support for the pupil's educational, social and emotional needs – for example, how absences will be managed, use of rest periods or additional support in catching up with lessons;
- If a child is self-managing their medication, this should be clearly stated with appropriate arrangements for monitoring;
- Who will provide this support, their training needs, expectations of their role and confirmation of proficiency to provide support for the child's medical condition from a healthcare professional, and cover arrangements for when they are unavailable;
- Who in the school needs to be aware of the child's condition and the support required;

Staff training

Statutory Requirement: *The Governing Body should ensure that this policy clearly sets out how staff will be supported in carrying out their role to support children with medical conditions, and how this will be reviewed. It should specify how training needs will be assessed and by whom training will be commissioned and provided.*

The school policy should be clear that any member of school staff providing support to a child with medical needs should have received suitable training.

Staff must not administer prescription medicines or undertake any health care procedures without the appropriate training (updated to reflect any individual healthcare plans)

All new staff will be inducted on the policy when they join the school through the new starters induction checklist. Records of this training will be stored in their individual personnel file.

All nominated staff will be provided awareness training on the school's policy for supporting children with medical conditions which will include what their role is in implementing the policy. This training will be carried out every two years, in response to an individual child's medical needs or following a review of the policy.

The awareness training will be provided to staff by Inset Day training with email training for those not in attendance at the Inset Day event. The information will be cascaded down by members of staff who have attended the Prescription Medicine training course.

We will retain evidence that staff have been provided the relevant awareness training on the policy by means of a signature sheet.

Where required we will work with the relevant healthcare professionals to identify and agree the type and level of training required and identify where the training can be obtained from. This will include ensuring that the training is sufficient to ensure staff are competent

and confident in their ability to support children with medical conditions. The training will include preventative and emergency measures so that staff can recognise and act quickly when a problem occurs and therefore allow them to fulfil the requirements set out in the individual healthcare plan.

Any training undertaken will form part of the overall training plan for the school and refresher awareness training will be scheduled at appropriate intervals agreed with the relevant healthcare professional delivering the training.

A 'Staff training record– administration of medicines' form will be completed to document the type of awareness training undertaken, the date of training and the competent professional providing the training.

The child's role

Statutory Requirement: *The Governing body will ensure that the school's policy covers arrangements for children who are competent to manage their own health needs and medicines.*

Where possible and in discussion with parents, children that are competent will be encouraged to take responsibility for managing their own medicines and procedures. This will be recorded in their individual healthcare plan. The healthcare plan will reference what will happen should a child who self-administers refuse to take their medication (this will normally be informing the parent/carer at the earliest opportunity).

Where a child is competent to self-administer, the medication will be kept in a secure but accessible place, however for the safety of other children, we do not encourage children to carry their own medicines and relevant devices. We will agree with relevant healthcare professionals/parent the appropriate level of supervision required and document this in their healthcare plan.

Managing medicines on School Premises

Statutory Requirement: *The Governing Body will ensure that the school's policy is clear about the procedures to be followed for managing medicines.*

The administration of medicines is the overall responsibility of the parents/carers. Where clinically possible we will encourage parents to ask for medicines to be prescribed in dose frequencies which enable them to be taken outside of school hours. However, the Head Teacher is responsible for ensuring children are supported with their medical needs whilst on site, therefore this may include managing medicines where it would be detrimental to a child's health or school attendance not to do so. We cannot guarantee that medicine is administered at any particular time, but is within the general dose frequency e.g. an hour before food.

We will not give prescription medicines to a child without their parent's/carers written consent (a 'parental agreement for setting to administer medicines' form will be used to

record this).

It is not our policy to administer non-prescription medication.

A documented tracking system to record all medicines received in and out of the premises will be put in place. The tracking system used is The Children's Services Medication Tracking Form.

The name of the child, dose, expiry and shelf life dates will be checked before medicines are administered.

On occasions where a child refuses to take their medication the parents will be informed at the earliest available opportunity.

We will only accept prescribed medicines that are in date, labelled, provided in the original container as dispensed by the pharmacist and include instructions for administration, their dosage and storage. We will only administer medicine according to the written medical instructions on the container regardless of parental preference. Insulin is the exception, which must still be in date but will generally be available to schools inside an insulin pen or a pump, rather than its original container, and the dosage will be determined at the time of administering according to blood test results.

Children who are able to use their own inhalers themselves are encouraged to do so, but it is the responsibility of staff to make sure that it is stored in a safe but readily accessible place, and clearly marked with the child's name.

Controlled drugs will be securely stored in a non-portable container which only named staff will have access to. We will ensure that the drugs are easily accessible in an emergency situation. A record will be kept of any doses used and the amount of the controlled drug held in school. There may be instances where it is deemed appropriate for a child to administer their own controlled medication. This would normally be at the advice of a medical practitioner.

We will never administer aspirin or medicine containing Ibuprofen to any child unless prescribed by a doctor.

Emergency medicines will be stored in a safe location but not locked away to ensure they are easily accessible in the case of an emergency.

Types of emergency medicines include:

- Injections of adrenaline for acute allergic reactions
- Inhalers for asthmatics
- Injections of Glucagon for diabetic hypoglycaemia

Other emergency medication i.e. Rectal diazepam or Buccal Midazolam for major seizures will be stored in accordance with the normal prescribed medicines procedures (see storage section).

Storage

All medication other than emergency medication will be stored safely in a locked cabinet, where the hinges cannot be easily tampered with and cannot be easily removed from the premise.

Where medicines need to be refrigerated, they will be stored in the staff refrigerator in a clearly labelled airtight container. There must be restricted access to a refrigerator holding medicines.

Children will be made aware of where their medicines are at all times and be able to access them immediately where appropriate. Where relevant they should know who holds the key to the storage facility.

Medicines such as asthma inhalers, blood glucose testing meters and adrenaline pens will always be readily available to children and not locked away. We will also ensure that they are readily available when outside of the school premises or on school trips.

Storage of medication whilst off site will be maintained at a steady temperature and secure. There will be appropriately trained staff present to administer day to day and emergency medication and copies of individual health care plans will be taken off site to ensure appropriate procedures are followed.

Disposal

It is the responsibility of the parents/carers to dispose of their child's medicines. It is our policy to return any medicines that are no longer required including those where the date has expired to the parents/carers. Parents/carers will be informed of this when the initial agreements are made to administer medicines. Medication returned to parent/ carers will be documented on the tracking medication form.

Sharps boxes will be in place for the disposal of needles. Collection and disposal of these will be arranged by the parent who will remove them from site.

Medical Accommodation

The SEN Room will be used for medical administration/treatment purposes, where a degree of privacy is appropriate. The location/room will be made available when required.

Record keeping

Statutory Requirement: *The governing body should ensure that written records are kept of all medicines administered to children.*

A record of what has been administered including how much, when and by whom, will be recorded on a 'record of prescribed medicines' form. The form will be kept on file. Any

possible side effects of the medication will also be noted and reported to the parent/carers.

Emergency Procedures

Statutory Requirement: *The Governing body will ensure that the school's policy sets out what should happen in an emergency situation.*

Where a child has an individual healthcare plan, this will clearly define what constitutes an emergency and provide a process to follow. All relevant staff will be made aware of the emergency symptoms and procedures. We will ensure other children in the school know what to do in the event of an emergency i.e. informing a teacher immediately if they are concerned about the health of another child.

Where a child is required to be taken to hospital, a member of staff will stay with the child until their parents arrive, this includes accompanying them to hospital by ambulance if necessary (taking any relevant medical information, care plans etc. that the school holds).

Day trips/off site activities

Statutory Requirement: *The Governing body should ensure that their arrangements are clear and unambiguous about the need to actively support pupils with medical conditions to participate in school trips and visits, or in sporting activities, and not prevent them from doing so.*

We will ensure that teachers are aware of how a child's medical condition will impact on their participation in any off site activity or day trip, but we will ensure that there is enough flexibility for all children to participate according to their own abilities with reasonable adjustments.

We will consider what reasonable adjustments we might make to enable children with medical needs to participate fully and safely on visits. We will carry out a risk assessment so that planning arrangements take account of any steps needed to ensure that pupils with medical conditions are included. We will consult with parents and seek advice from the relevant healthcare professional to ensure that pupils can participate safely.

Unacceptable practice

Statutory Requirement: *The governing body will ensure that the school's policy is explicit about what practice is not acceptable.*

Staff are expected to use their discretion and judge each child's individual healthcare plan on its merits, it is not generally acceptable practice to:

- prevent children from easily accessing their inhalers and medication and administering their medication when and where necessary;
- assume that every child with the same condition requires the same treatment;

- ignore the views of the child or their parents; or ignore medical evidence or opinion (although this may be challenged);
- send children with medical conditions home frequently or prevent them from staying for normal school activities, including lunch, unless this is specified in their individual healthcare plans;
- if the child becomes ill, send them to the school office or medical room unaccompanied or with someone unsuitable;
- penalise children for their attendance record if their absences are related to their medical condition, e.g. hospital appointments;
- prevent pupils from drinking, eating or taking toilet or other breaks whenever they need to in order to manage their medical condition effectively;
- prevent children from participating, or create unnecessary barriers to children participating in any aspect of school life, including school trips e.g. by requiring parents to accompany the child.

Liability and Indemnity

Statutory Requirement: *The governing body will ensure that the appropriate level of insurance is in place and appropriately reflects the level of risk.*

Staff at the school are indemnified under the County Council self-insurance arrangements.

The County Council is self-insured and has extended this self-insurance to indemnify school staff who have agreed to administer medication or undertake a medical procedure to children. To meet the requirements of the indemnification, we will ensure that staff at the school have parents' permission for administering medicines and members of staff will have had training on the administration of the medication or medical procedure.

Complaints

Statutory Requirement: *The governing body will ensure that the school's policy sets out how complaints may be made and will be handled concerning the support provided to pupils with medical conditions.*

Should parents or children be dissatisfied with the support provided, they can discuss their concerns directly with the Head Teacher. If for whatever reason this does not resolve the issue, they may make a formal complaint via the school's complaints procedure.

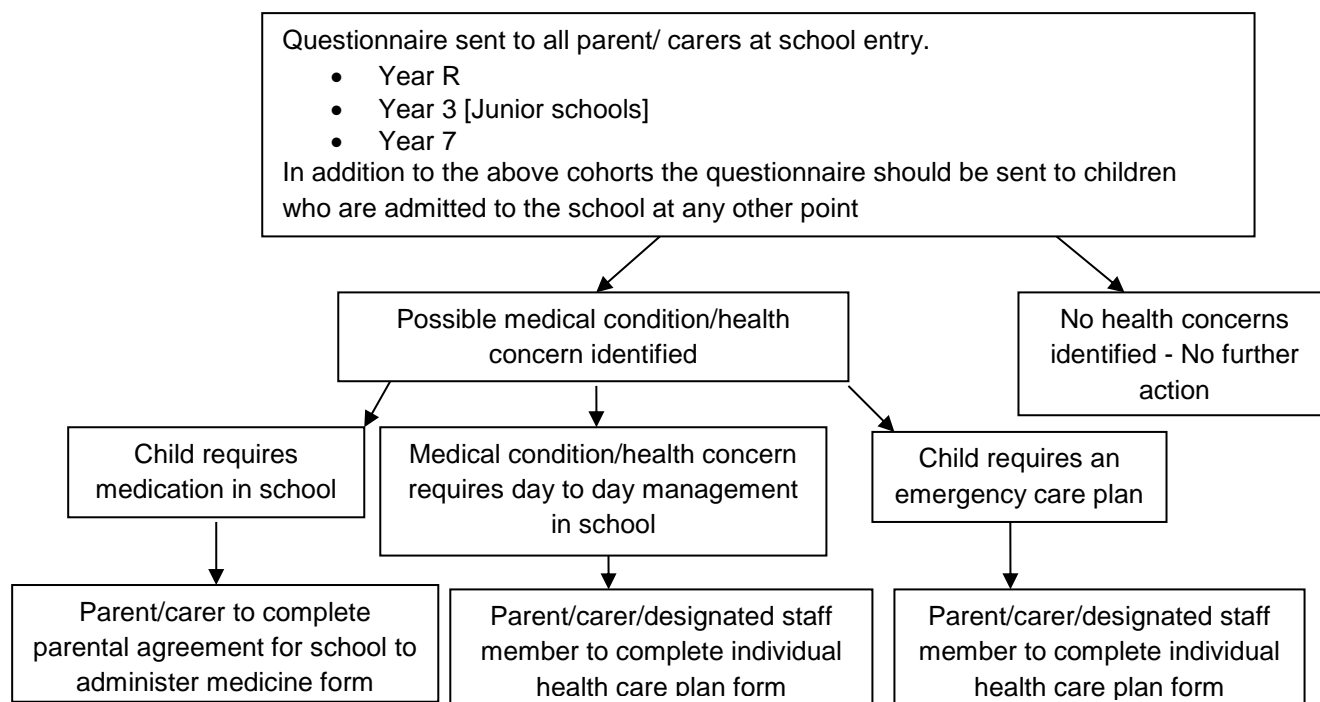
Signature of Responsible Manager/Headteacher:

Date:

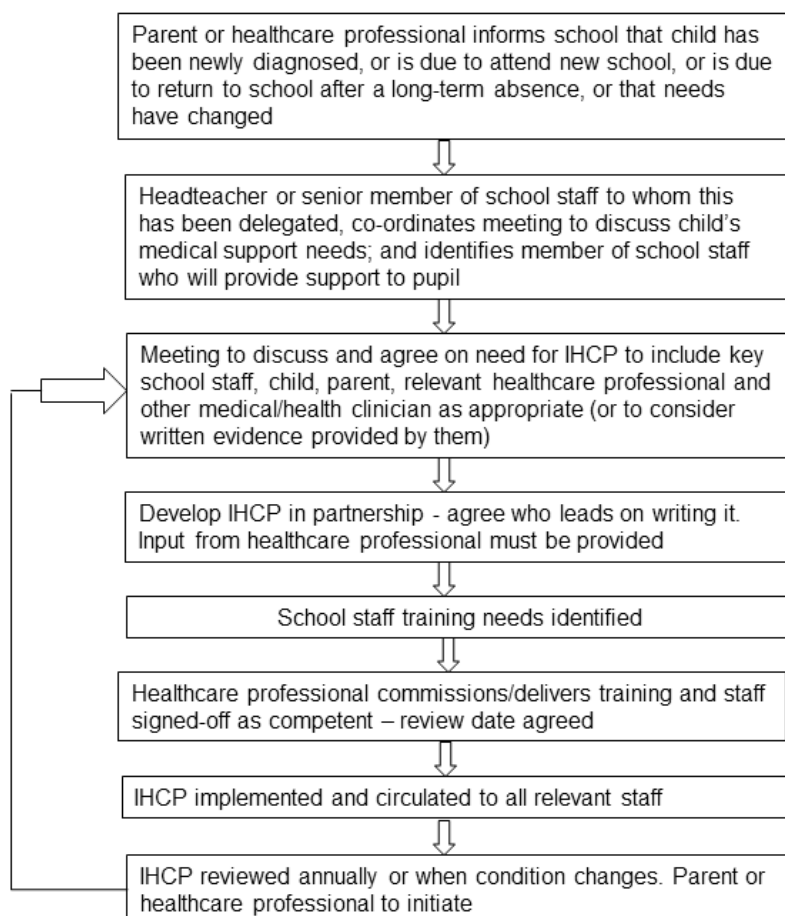
APPENDIX A

Suggested process for identifying children or young people with a medical condition that may require support in school

Not all children with a health condition will require a health care plan in school however the form will help schools to ascertain which children require support. In addition to this schools may be informed at any other point by a parent or health professional if a child is newly diagnosed with a health condition.



Please see sample flowchart below from the Supporting pupils with medical conditions guidance



APPENDIX B

Please complete the questionnaire below and return it to school

It is important that all children with medical conditions are supported to make sure that they are able to access their education. Some children with medical conditions may need care or medication to manage their health condition and to keep them well during the school day. Could you please complete the questionnaire below and return it to school as soon as possible so that we are able to assess your child's health needs and make arrangements to support them if necessary. In order to ensure that any medical needs are appropriately met in school we may need to discuss your child's health with the School Nursing service or another health professional who is involved in your child's care.

Name of child Date of Birth

Home Address.....

Does your child have a medical condition/ health concern?

YES NO

If YES please give details

Does your child have a medical condition/health concern that needs to be managed during the school day?

YES NO

If YES please give details

Does your child take medication during the school day?

YES NO

If YES please give details

Does your child have a health care plan that should be followed in a medical emergency?

YES NO

If YES please give details

The above information is, to the best of my knowledge, accurate at the time of writing and I give consent to the school to discuss this information with the School Nursing service or other health professionals who are involved in my child's care.

Signature(s) _____ Print Name _____
[Parent/ Carer with parental responsibility]

Date _____ Contact number _____